

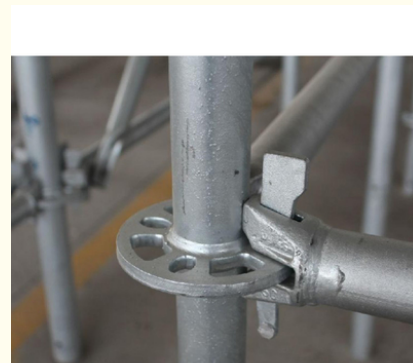
Ringlock Scaffolding Construction Building Scaffold Material Ring Lock Echafaudage Galvanized System

Our Product Introduction

for more products please visit us on bythaiscaffold.com

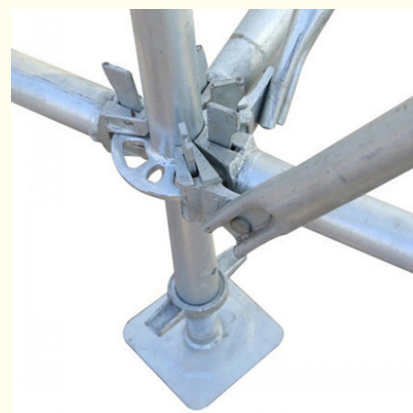
Basic Information

- Place of Origin: China
- Brand Name: Bythai
- Certification: SGS
- Model Number: BM202
- Minimum Order Quantity: 1000
- Price: 4.5-8.5
- Packaging Details: In bundles
- Delivery Time: 10-15
- Payment Terms: TT/TC



Product Specification

- Surface Treatment: Hot-dip Galvanized
- Shipping Origin: China
- Material: Q235 Steel
- Warranty: 2 Years
- Product Name: Ringlock System
- Application Scenarios: Architecture
- Highlight: **construction building scaffold ringlock system, Building ringlock system, Ring Lock Echafaudage Galvanized System**



More Images



Product Description

Product Description:

Ringlock System Scaffolding

The Ringlock System Scaffolding is a revolutionary scaffold system that provides the ultimate solution for all your scaffolding needs. Made from high-quality Q235 steel and hot-dip galvanized for long-lasting durability, this scaffolding system is perfect for architecture projects. It comes with a 2-year warranty, ensuring you get the best value for your investment.

Application Scenarios: Architecture

The Ringlock System Scaffolding is designed specifically for architecture projects. Its versatility and flexibility make it suitable for various applications such as building construction, restoration, renovation, and maintenance. Whether you are working on a commercial, residential, or industrial project, this scaffolding system can meet your needs.

Product Name: Ringlock System

The name "Ringlock System" perfectly describes the unique design of this scaffold. It consists of vertical standards with rosettes at regular intervals, horizontal ledgers, diagonal braces, and steel planks, all connected by locking pins. This ring lock type scaffold is easy to assemble and disassemble, making it a popular choice among construction professionals.

Material: Q235 Steel

The Ringlock System Scaffolding is made from high-quality Q235 steel, known for its strength and durability. This material can withstand heavy loads, making it suitable for various construction projects. The steel is also corrosion-resistant, ensuring the scaffolding system can withstand harsh weather conditions and last for many years.

Surface Treatment: Hot-dip Galvanized

To further enhance its durability, the Ringlock System Scaffolding is hot-dip galvanized. This process involves coating the steel with a layer of zinc, making it more resistant to rust and corrosion. The galvanized surface also makes the scaffolding system more visually appealing and easier to clean.

Easy Installation Scaffold System

One of the key features of the Ringlock System Scaffolding is its easy installation process. With its unique design and locking pins, the scaffold can be assembled and disassembled quickly and easily. This not only saves time but also reduces labor costs, making it a cost-effective choice for construction projects.

High Load Capacity

The Ringlock System Scaffolding has a high load capacity, making it suitable for heavy-duty applications. The vertical standards are designed to withstand vertical and horizontal loads, while the ledgers and diagonal braces provide additional support. This ensures the safety and stability of the scaffolding, even when supporting heavy materials and workers.

Durable and Safe

The combination of high-quality materials and hot-dip galvanization makes the Ringlock System Scaffolding extremely durable and safe. It can withstand harsh weather conditions and is resistant to wear and tear, ensuring a longer lifespan. Additionally, the locking pins provide a secure connection between the different components, making the scaffold stable and safe for workers to use.

Versatile and Flexible

The Ringlock System Scaffolding is a versatile and flexible scaffolding system. Its modular design allows for various configurations to adapt to different project requirements. It can be used for both vertical and horizontal access, and its adjustable platform height makes it suitable for working at different levels. This versatility makes it an ideal choice for various construction projects.

Technical Parameters:

Product Name	Ringlock System Scaffolding
Application Scenarios	Architecture
Surface Treatment	Hot-dip Galvanized
Material	Q235 Steel
Warranty	2 Years
Shipping Origin	China
Key Features	Multi-functional, Modular, High Load Capacity
Product Type	Layher Scaffolding, Steel Ringlock Scaffolding
Installation	Easy Installation Scaffold System

Applications:

Ringlock System Scaffolding

Brand Name: Bythai

Model Number: BM202

Place of Origin: China

Certification: SGS

Price: 4.5-8.5

Packaging Details: In bundles

Delivery Time: 10-15

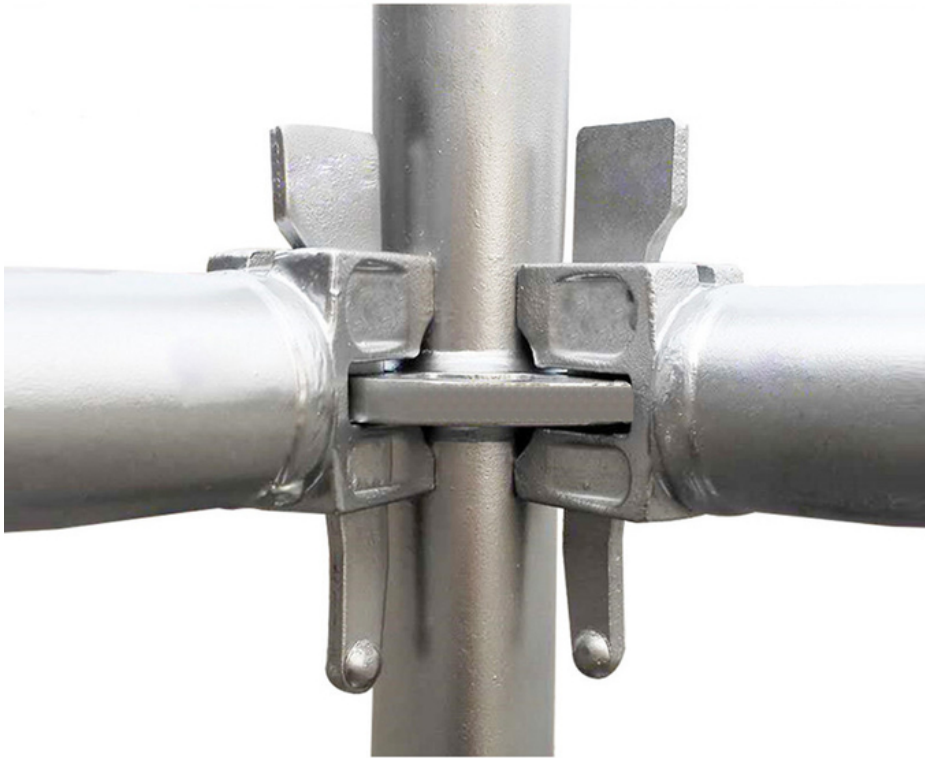
Payment Terms: TT/TC
Surface Treatment: Hot-dip Galvanized
Shipping origin: China
Application scenarios: Architecture
Warranty: 2 Years
Material: Q235 Steel

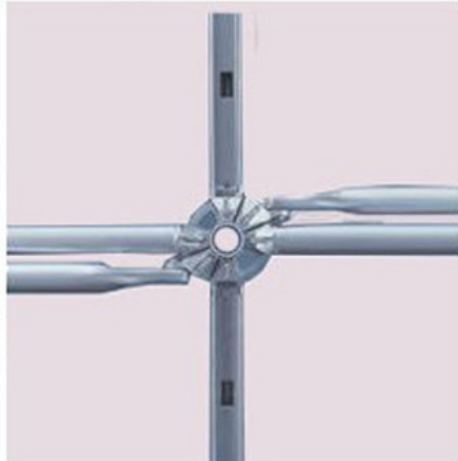
The Ringlock System Scaffolding by Bythai is an innovative and highly versatile scaffold system that is designed to meet the demands of modern architecture. With its easy installation process, high load capacity, and cost-effective design, it has become a popular choice for construction projects around the world.

The innovative ring lock design of this scaffolding system allows for quick and easy assembly, making it a time-saving solution for construction sites. The hot-dip galvanized coating ensures durability and longevity, making it suitable for both indoor and outdoor use.

The high load capacity of the Ringlock System Scaffolding makes it a reliable and safe choice for various construction needs. Whether it's for building maintenance, bridge construction, or high-rise construction, this system can handle heavy loads with ease.

The versatile usage of this scaffolding system makes it suitable for a wide range of applications. From supporting formwork to providing access for workers, it can adapt to different construction needs. Its modular design also allows for customization and flexibility on the job site.







Bythai Scaffolding Co.,Ltd



17300780862



info@bythaiscaffolding.com



bythaiscaffold.com

No. 605,Industrail Exchange Center ,Huanghua Town Changsha Hunan China