

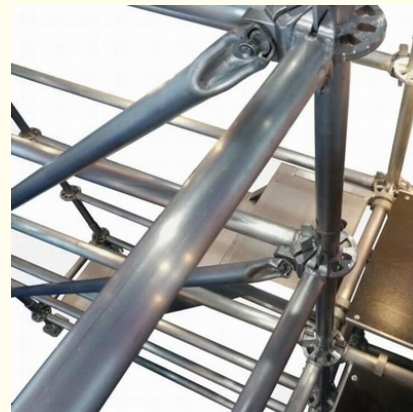
## Galvanized Q235 Steel Hot Dip Galvanized Ringlock / Steel Ringlock Scaffolding for Architecture

Our Product Introduction

for more products please visit us on [bythaiscaffold.com](http://bythaiscaffold.com)

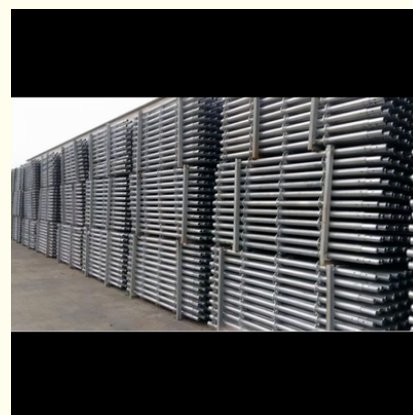
### Basic Information

- Place of Origin: Tianjin China
- Brand Name: Bythai
- Certification: SGS
- Model Number: BM202
- Minimum Order Quantity: 1000
- Price: 4.5-8.5
- Packaging Details: In bundles
- Delivery Time: 10-15
- Payment Terms: TT/TC



### Product Specification

- Warranty: 2 Years
- Material: Q235 Steel
- Application Scenarios: Architecture
- Product Name: Ringlock System
- Surface Treatment: Hot-dip Galvanized
- Shipping Origin: China
- Highlight: **Architecture Steel Ringlock Scaffolding, Q235 Steel Ringlock Scaffolding, Hot Dip Galvanized Steel Ringlock Scaffolding**



### More Images



## Product Description

### Product Description:

The Ringlock System Scaffolding is a state-of-the-art, versatile, and efficient solution designed for a variety of construction and maintenance applications. Crafted from high-quality Q235 Steel, this system is engineered to provide exceptional strength and durability, ensuring the safety and security of workers at all times. Originating from Tianjin, China, the Ringlock System Scaffolding is a product of rigorous manufacturing standards and innovative engineering.

At the heart of the system's design is the secure scaffolding joints technology, which ensures a robust connection between the various components of the scaffold. These secure scaffolding joints are integral to the system's reliability, providing a stable working platform even in the most demanding construction environments. The precision-engineered ringlock ledger head is a testament to the system's commitment to safety and ease of assembly. This feature allows for a quick, simple, and secure connection of ledgers and braces to the vertical standards, drastically reducing assembly time and enhancing overall structural integrity.

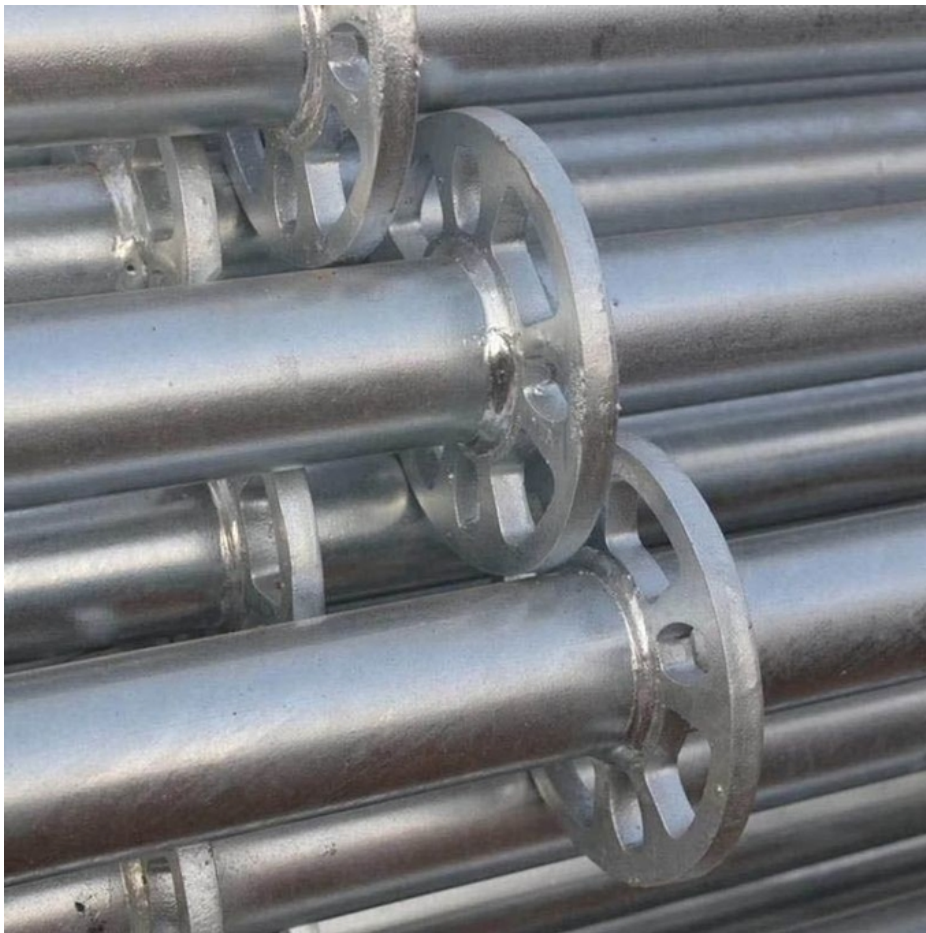
The material used in the construction of the Ringlock System Scaffolding is Q235 Steel, known for its excellent structural properties and resistance to deformation. This choice of steel ensures that the scaffolding system can withstand heavy loads and the rigors of daily use without compromising performance. The Q235 Steel also contributes to the system's long service life, further testament to the product's quality and durability.

In addition to its robust material composition, the Ringlock System Scaffolding features a high-quality surface treatment that sets it apart from other scaffolding systems. The hot-dip galvanized finish not only gives the scaffolding a professional and clean appearance but also serves a critical function in protecting the steel from corrosion and environmental wear. This meticulous surface treatment process ensures that the Ringlock System Scaffolding can endure harsh weather conditions, making it suitable for use in diverse climates and work sites.

Understanding the importance of product reliability and customer satisfaction, the Ringlock System Scaffolding comes with a warranty period of 2 years. This warranty underlines the manufacturer's confidence in the system's quality and their commitment to providing a reliable, defect-free product. Customers can rest assured that their investment is protected and that they will receive support in the unlikely event of any issues arising from material or manufacturing defects.

### Technical Parameters:

Technical Parameter	Description
Surface Treatment	Hot-dip Galvanized
Place of Origin	Tianjin, China
Product Name	Ringlock System
Shipping Origin	China
Application Scenarios	Architecture
Material	Q235 Steel
Warranty	2 Years







### **Packing and Shipping:**

The Ringlock System Scaffolding is meticulously packaged to ensure the integrity and safety of each component during transit. Each piece is wrapped in protective material to prevent scratches and corrosion. The components are then carefully stacked and secured on wooden pallets, which are banded and shrink-wrapped to maintain stability and prevent movement. The packages are labeled with identification tags for easy inventory and tracking.

For shipping, the palletized Ringlock System Scaffolding is loaded into containers or onto trucks using forklifts to prevent any damage. All necessary precautions are taken to comply with transportation regulations, ensuring a smooth and efficient delivery to the destination. Upon arrival, each shipment is thoroughly inspected to guarantee that the scaffolding components have been received in excellent condition, ready for immediate use.



**Bythai Scaffolding Co.,Ltd**



17300780862



info@bythaiscaffolding.com



bythaiscaffold.com

No. 605,Industrail Exchange Center ,Huanghua Town Changsha Hunan China